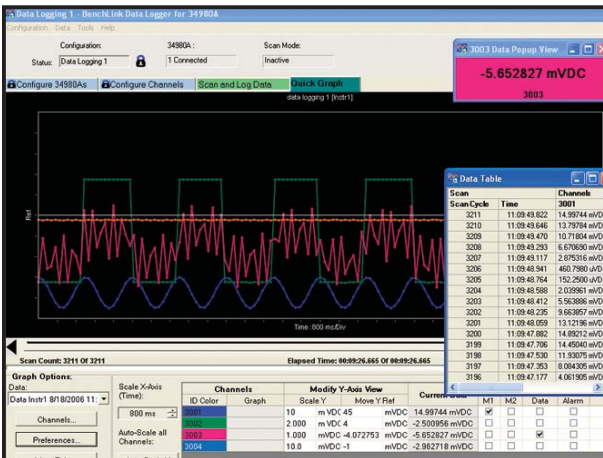
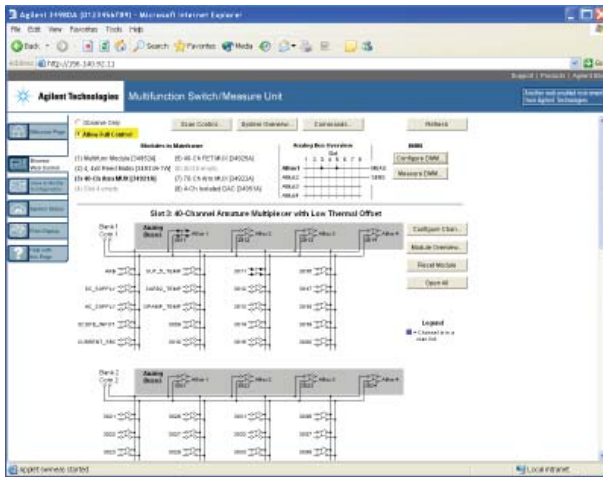
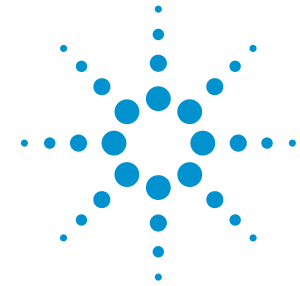


## Quick Fact Sheet

# Agilent 34980A Data Acquisition and Switching

The 34980A provides flexible, reliable switching and data acquisition in one compact, economical box



### Key features

- DAC/Switch unit (8-slots, up to 560 2-wire channels)
- Internal 6 ½ digit DMM for precision measurements
- Easy-to-read display to monitor the setup and measured values
- Easy-to-use front panel for manual setup control
- Scan rates at up to 1000 channels/second
- Computer interfaces: GPIB, USB, LAN (LXI)
- Easy remote access with built-in web interface
- Twenty-one different plug-in modules for the 34980A
- SCPI programming language, drivers and Data Logger software included

### High quality switching with built-in 6 ½ Digit Digital Multimeter (DMM)

- Wide variety of switching: General purpose, multiplexer, matrix, RF,  $\mu$ W, and  $\mu$ W relay driver
- Internal DMM measures DC/AC voltage and current, resistance, temperature, frequency/totalize
- Digital to analog converters for analog output
- Digital input and output



Agilent Technologies

# Quick Fact Sheet

## Agilent 34980A Data Acquisition and Switching

### Uncompromising performance

- High precision measurements
- High quality switching
- High productivity software

### Everything you need to know about the mainframe

Features	34980A
Analog measurements	Voltage, current, resistance, frequency and temperature
Digital IO	Up to 512 bits
Analog output	-10 V to +10 V, 20 mA
Multiplexing	Max 640 1-wire, 560 2-wire
Matrix	Max 4096 crosspoints
General purpose	Max 256 switches
RF multiplexing	Max 128 channels, 3 GHz
$\mu$ Wave switching	Max 24 channels, 26 GHz
$\mu$ Wave switch/Attenuator drive	See Agilent $\mu$ wave switches
Interface	GPIO, USB, LAN



Many 34980A modules are available in a standalone, LXI-compliant form factor

### 34980A plug-in modules

Part	Description
34921A	40 channel GP Mux with built-in thermocouple reference
34922A	70 channel Armature Mux
34923A	40/80 channel Reed mux
34924A	70 channel Reed mux
34925A	40/80 channel FET Mux
34931A	Dual 4x8 armature matrix
34932A	Dual 4x16 armature matrix
34933A	Dual/Quad 4x8 reed matrix
34934A	Quad 4x32 reed matrix
34937A	32 channel form C/form A
34938A	20 channel 5A form A
34939A	64 channel form A
34941A	Quad 1x4 3 GHz 50 $\Omega$ Mux
34942A	Quad 1x4 1.5 GHz 75 $\Omega$ Mux
34945A	$\mu$ Wave switch/Attenuator driver
34946A	Dual 1x2 SPDT 4 & 20 GHz <ul style="list-style-type: none"><li>• Option 004 2 N1810TL 4 GHz term switches</li><li>• Option 020 2 N1810TL 20 GHz term switches</li><li>• Option 026 2 N1810TL 26.5 GHz term switches</li></ul>
34947A	Triple 1x2 SPDT 4 & 20 GHz <ul style="list-style-type: none"><li>• Option 004 3 N1810UL 4 GHz unterm switches</li><li>• Option 020 3 N1810UL 20 GHz unterm switches</li><li>• Option 026 3 N1810UL 26.5 GHz unterm switches</li></ul>
34950A	64-bit digital I/O with counter
34951A	4 channel isolated DAC
34952A	Multi-function DIO DAC totalize
34959A	Breadboard

### Accessories

Part	Description
34832A	BenchLink DataLogger Pro Software License for 34980A
34307A	10-pack J-type thermocouples
34308A	5-pack 10 $\Omega$ thermistors

For more information on Agilent switches please visit:  
[www.agilent.com/find/34980A](http://www.agilent.com/find/34980A)

To find a distributor go to:  
[www.agilent.com/find/distributors](http://www.agilent.com/find/distributors)

### Recommended service options

Additional two years of Return-to-Agilent warranty R-50C-011-3  
Additional two years of Return-to-Agilent calibrations R-50C-011-5  
For more information go to [www.agilent.com/find/removealldoubt](http://www.agilent.com/find/removealldoubt)

